

Platform Assembly

Tools you will need:

- Ratchet or impact wrench - ½ inch with deep socket.
- Open end wrench - ½ inch
- Screwdriver
- Mallet
- Level for checking level and vertical. (There is also a leveling app for phones.)
- Device for measuring angles of such as Digital Level
- Drill/driver for self-tapping screws (No. 2 square)
- Metal saw or grinder with cut off wheel in case legs or handrails need to be shortened.
- Anchoring tools required for site conditions – may include hammer drill and drivers.

Helpful Tips:

- Review the drawing that came with your shipment before starting assembly.
- Consider door opening directions to avoid interference with Handrails, Platform and Ramp.
- Proper installation requires anchoring to immovable objects. Consider terrain, wind and conditions of use.
- Place parts in approximate location on ground before assembly.
- Do not anchor posts to the ground until the entire frame assembly is completed and located in final position.
- Do not tighten nuts/bolts until the whole Ramp/Platform frame is completely assembled and you are satisfied with position and level.
- Anchor the Foot of each Leg to a solid, immovable footer or similar foundation. If that is impossible due to site conditions, use cable anchors to fix in ground positions.
- All bolts are 5/16-18 which takes a ½ in Socket Wrench. Self-tapping screws are provided.

Step 1: Unwrap all parts/ pieces and lay them out.

*Some installers prefer to organize them by putting the same pieces together. Others prefer to lay them out close to how they will be assembled.

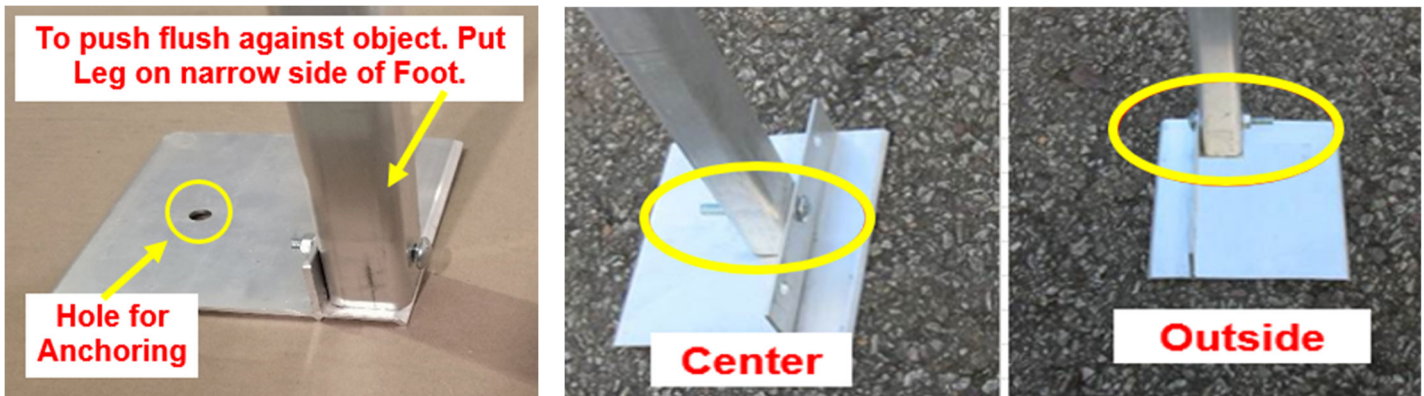
***Make sure all the Ramp Sections, Platforms, and Handrails arrive undamaged from shipping and use the Picklist to confirm the quantity of parts.**

***See Pages 6-7 for pictures of the parts with descriptions.**

Step 2: Attach Feet to Legs with 2 ½” carriage bolts in the most convenient position (see below).

*The Leg can go on either side of the vertical plate.

*There is a hole in each Footplate to use for anchoring.



Step 3: Loosen two bolts at one corner of the Platform Deck. This piece of the Platform is called a “Clamp”. Insert a Leg through the Clamp and set to the planned height of the Platform.

*Legs on the corners of the platform must extend between 6” & 18” above Platform Deck. The excess Leg should not extend more than 18” above Platform Deck as it will interfere with the lower Handrail. The Legs can be cut if necessary.

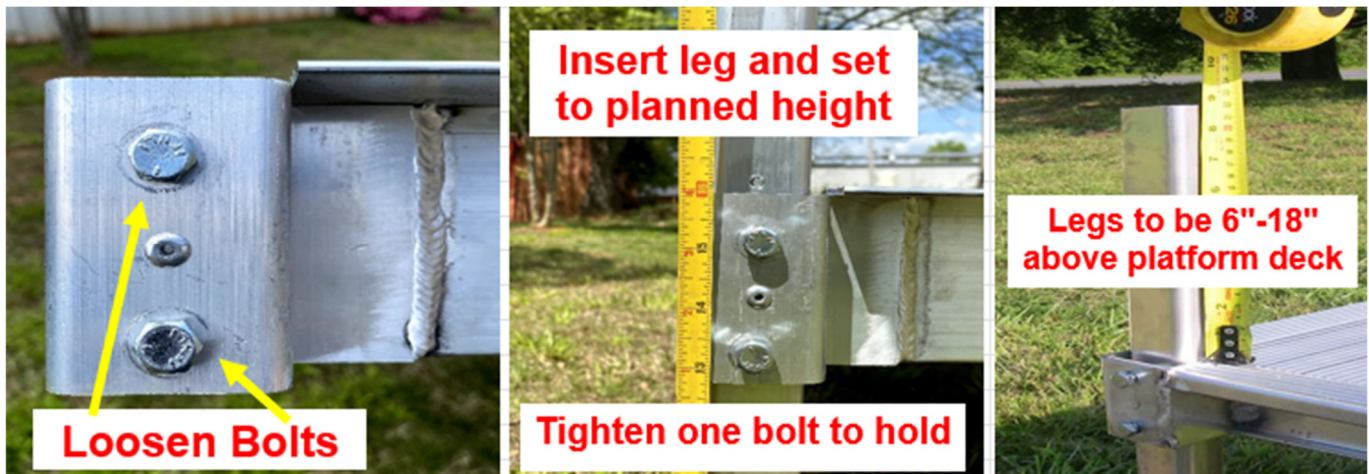
*Only tighten one bolt on the Clamp to hold the Leg in position.

*If cross-bracing is being used for the project slide the cross-brace-clamp onto the leg before sliding into the platform clamp.

*Repeat on all 4 corners of the Platform. It is easier to stand the Platform on its side and roll it to reach all corners.

***For 6 legged Platforms, insert middle Legs but adjust them so they do not touch the ground until Platform is leveled. The middle Legs must extend no more than 3” above the Platform Deck when in final position.**

*Be aware that a very slight slope away from the building is preferred to allow rain or snow runoff from the roof to flow from the Ramp and building.





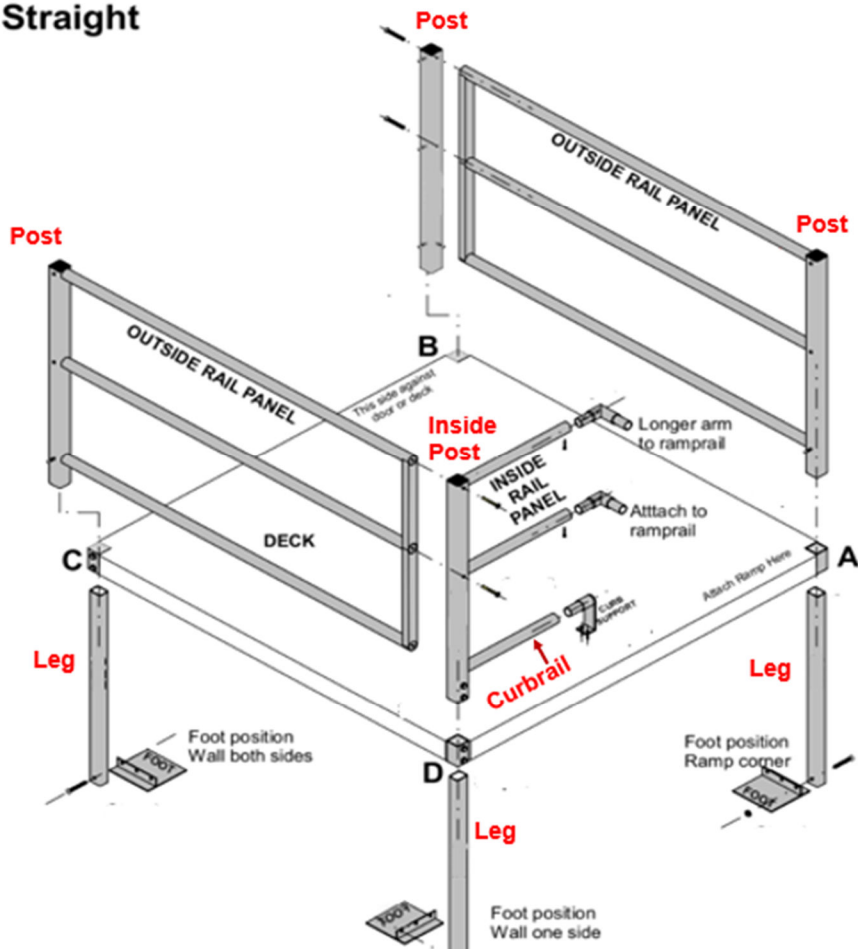
Step 4: Handrails can be assembled in various configurations. The diagrams on pages 3-5 show the most commonly used assembly of Handrail Panels for Platforms. Find the diagram that best fits your application. Some adjustments may need to be made if you are centering the ramp on the platform or if you have two ramps connected to it. This requires additional rail pieces that should be provided to you.

If the Ramp will be opposite of the door/opening, see **“Platform Instructions: Straight”**.

If the Ramp will be a 90-degree turn, see **“Platform Instructions: Turn 90”**.

If the Ramp will be making a U-Turn, see **“Platform Instructions: U-Turn”**.

Platform Instructions Straight



STRAIGHT

Step 1: If Inside Rails & Post are not pre-assembled, assemble Rails to Post to make the Inside Panel. The shorter Rail is Curbrail and goes on the bottom.

Step 2: Loosen the hexbolts located on bottom of Posts with the Outside Rail Panel and slide them over Legs at corners A & C. If there is a stud in the bottom of the post on the side facing the Panel, knock it out or cut it.

Step 3: Slide the Post with the Inside Rail Panel over the Leg at corner D and connect to the Outside Rail Panel using 2 3/4" Hexbolts.

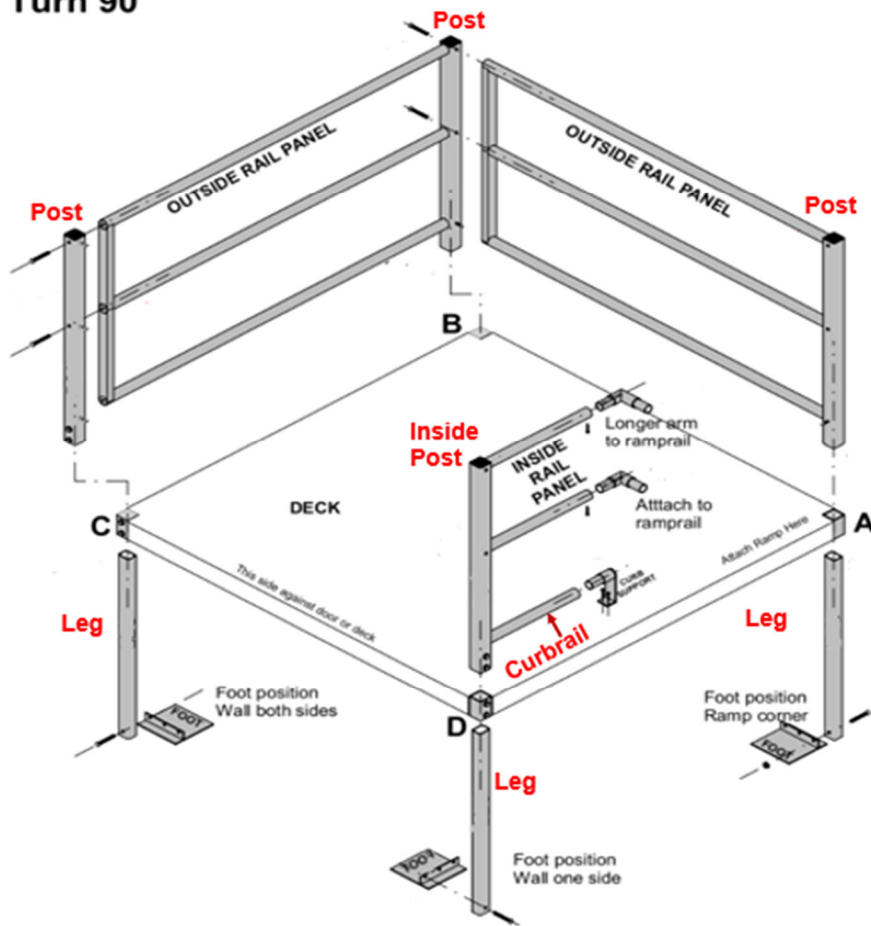
Step 4: Slide another Post over Corner B and connect to the Outside Rail Panel using 2 3/4" Hexbolts.

Step 5: Take the longer Elbow and insert the Sleeve into the upper Inside Rail. The Curb Support will connect to the lower Rail with the other end pointing downward. Anchor to the Platform Deck with Tapping Screws. Use another Elbow on the middle Rail.

Step 6: Check the level of the Platform and adjust as necessary. Tighten all Bolts.

Platform Instructions
Turn 90

TURN 90



Step 1: If Inside Rails & Post are not pre-assembled, assemble Rails to Post to make the Inside Panel. The shorter Rail is Curbrail and goes on the bottom.

Step 2: Loosen the hexbolts located on bottom of Posts with the Outside Rail Panel and slide them over Legs at corners A & B. If there is a stud in the bottom of the post on the side facing the Panel, knock it out or cut it.

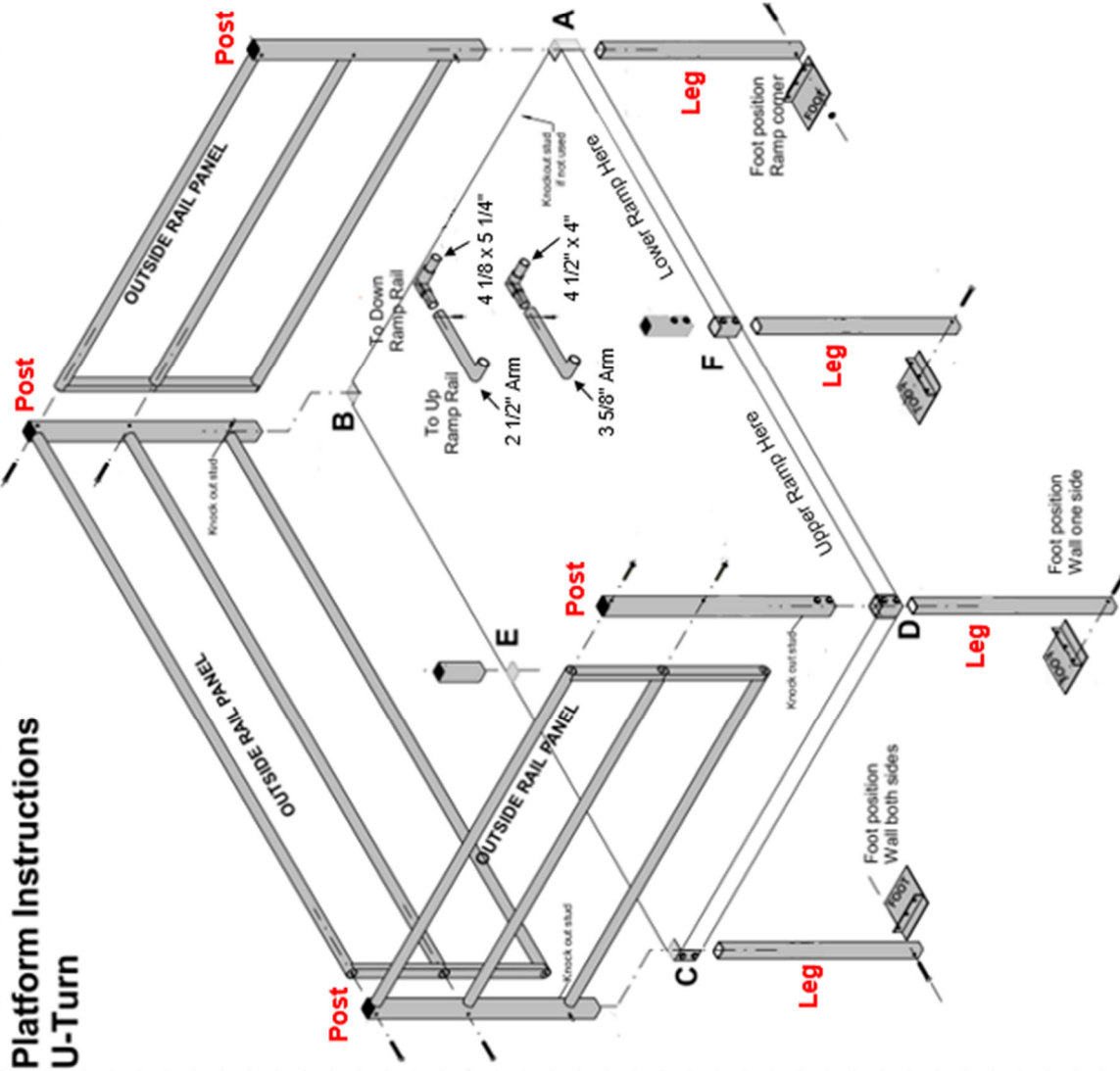
Step 3: Connect the two Outside Rail Panels using 2 3/4" Hexbolts.

Step 4: Slide the Post with the Inside Rail Panel over the Leg at corner D. Connect to the Outside Rail Panel using 2 3/4" Hexbolts.

Step 5: Take the longer Elbow and insert the Sleeve into the upper Inside Rail. The Curb Support will connect to the lower Rail with the other end pointing downward. Anchor to the Platform Deck with Tapping Screws. Use another Elbow on the middle Rail.

Step 6: Check the level of the Platform and adjust as necessary. Tighten all Bolts.

**Platform Instructions
U-Turn**



U-TURN

Step 1: Before setting up the U-Turn Platform, be sure that the Ramp leading to it is set up with the Handrails already assembled on the Ramp.

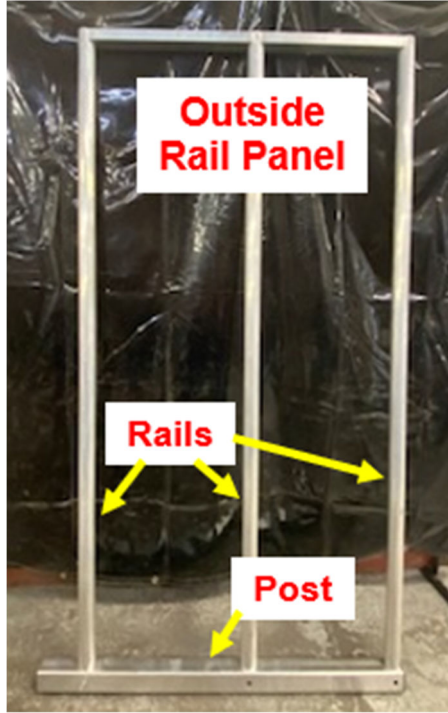
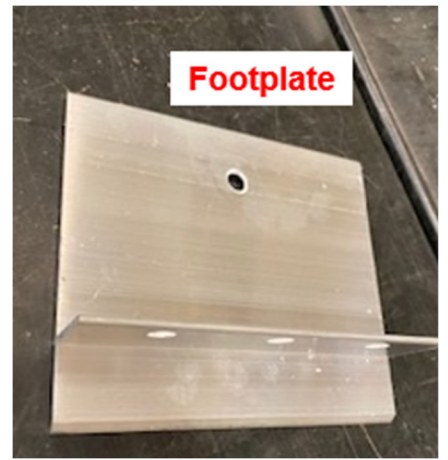
Step 2: Loosen the hexbolts located on bottom of Posts with the Outside Rail Panel and slide them over Legs at corners A, B, & C. If there is a Stud in the bottom of the Post on the side facing the Panel, knock it out or cut it.

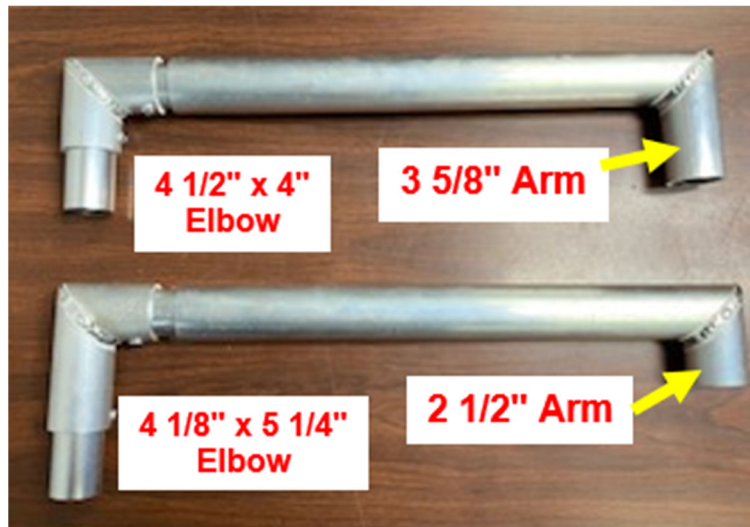
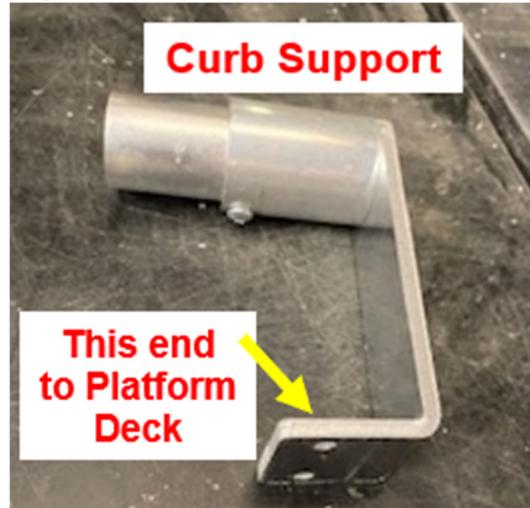
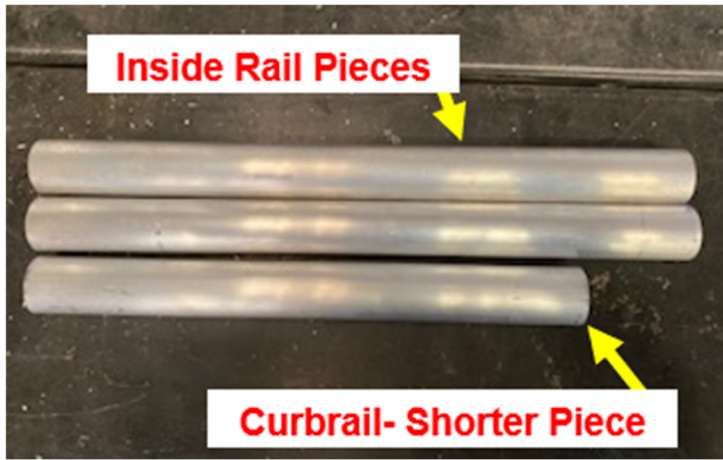
Step 3: Slide another Post over the Leg on Corner D

Step 4: Connect the Outside Rail Panels to the other Posts using 2 3/4" Hex Bolts. Tighten the bolts at the bottom of the Posts.

Step 5: Connect the Arms & Elbows. The Arm with the longer short side (3 5/8") will go on the bottom Rail of the Handrail Panel. The smaller Elbow (4 1/2" x 4") will connect to that Arm using the 4 1/2" side. On the top Rail, use the Arm that has the shorter short side (2 1/2") and connect the other Elbow (4 1/8 x 5 1/4") using the 4 1/8" side. The Ramp Handrails that will go down will connect to those elbows.

Step 6: Check the level of the Platform and adjust as necessary. Tighten all Bolts.





***Arms are only used on U-Turn platforms**