

Ramp Assembly Instructions

For a short video of assembly go to: <http://www.access4uinc.com/instructionsvideo/g5.mp4>

Common sense:

- Make a sketch of your installation before starting assembly. Consider door opening directions to avoid interference with handrails, platform and ramp.
- Ramps in hurricane zones must be installed with hurricane anchors.
- Proper Installation requires anchoring to immovable objects. Consider terrain, wind and conditions of use.

Tools:

- Ratchet or impact wrench - ½ inch with deep socket
- Open end wrench - ½ inch
- Screwdriver
- Mallet
- Level for checking level and vertical
- Device for measuring angle of such as Digital Level
- Drill/driver for self-tapping screws (No. 2 square)
- Metal saw or grinder with cut off wheel in case legs or handrails need to be shortened
- Anchoring tools required for site conditions – may include hammer drill and drivers

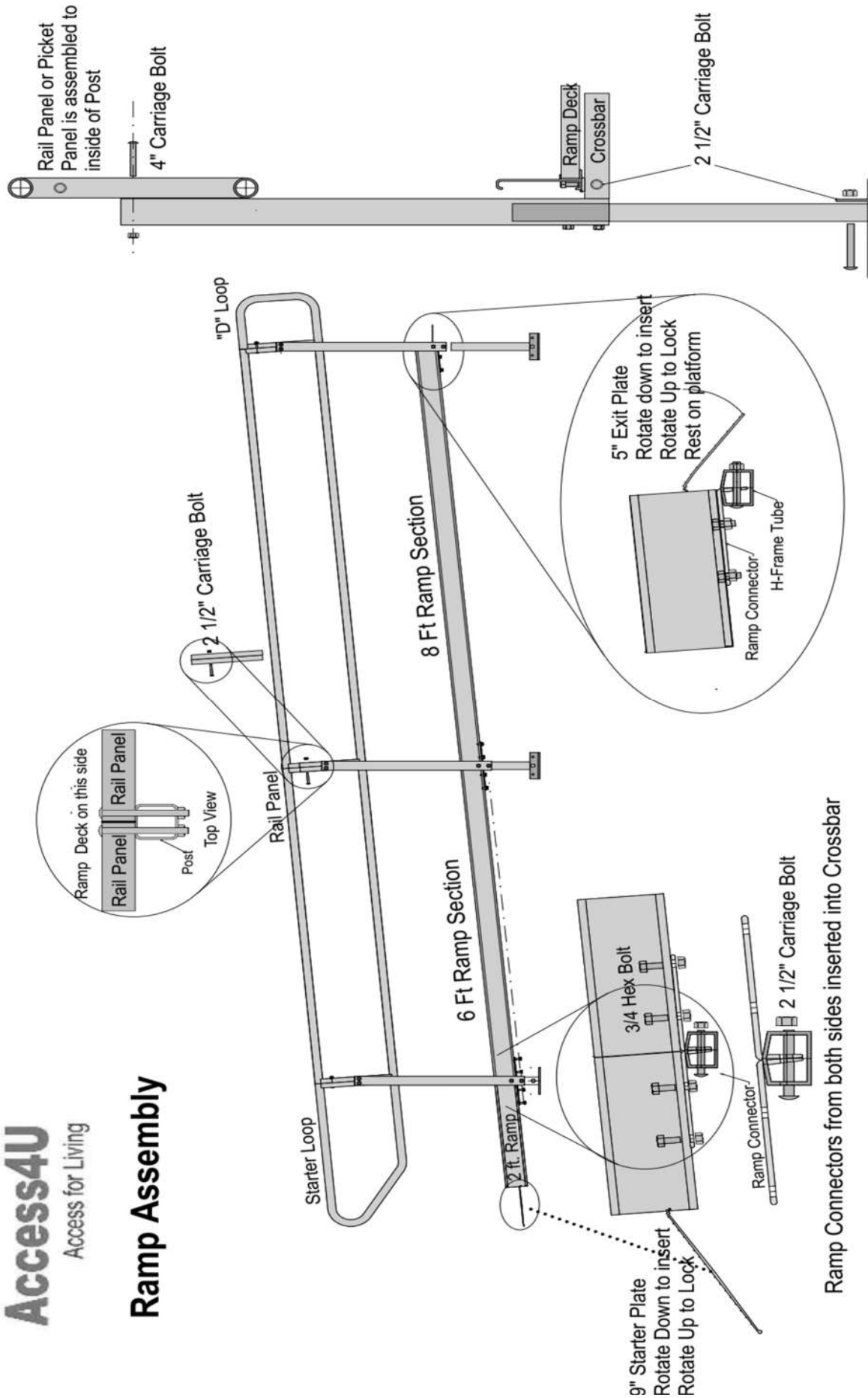
Important hints to help make assembly easier:

- Do not tighten nuts/bolts until whole ramp/platform is completely assembled and you are satisfied with position, slope and level.
- All bolts are 5/16-18 which takes a ½ inch socket wrench.
- Bit for self-tapping screws is provided (No. 2 square driver)
- Anchor each ramp section with solid, immovable footer, screw anchor (to cable) or similar with cable to each H-frame

Assembly:

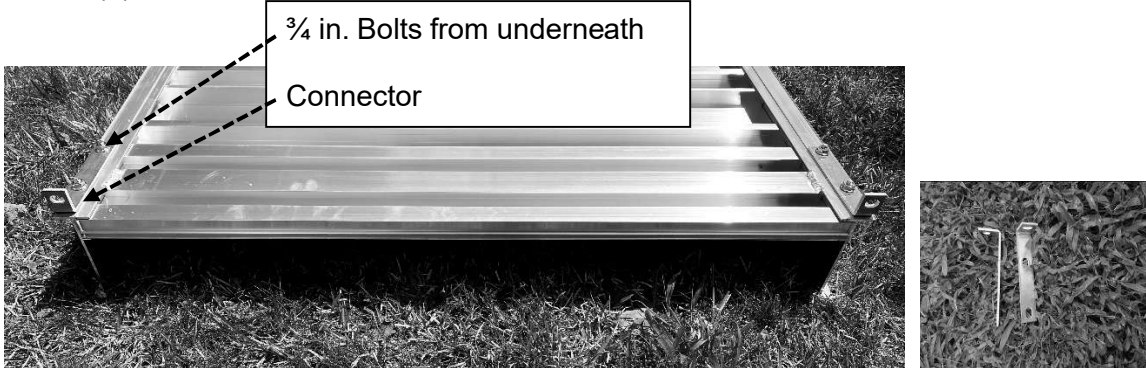
- Start at the highest point and assemble sequentially toward the lowest point
- Set slope of each section as it is added.
 - 1:12 slope is 4.9 deg aka 1 inch per foot ADA guideline
 - 1:8 slope is 7.1 deg aka 1.5 inch per foot
 - 1:2 slope is 9.4 deg
 - ADA guidelines require that no ramp run have a rise of more than 30 inches without a rest or turn platform

Ramp Assembly

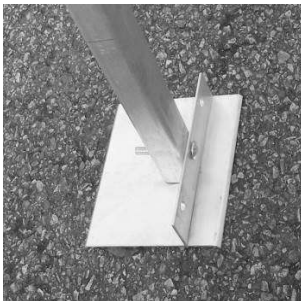


BEGIN ASSEMBLY HERE

1. Arrange the ramp sections near the desired positions for installation. Place ramp sections upside down and to the side of final position (so when flipped over they are near final position) to begin assembly
2. Attach (4) "L shaped connectors to corners as shown



3. Assemble Footplates to Legs
 - a. LEG can be assembled to FOOT in multiple locations on the footplate to accommodate installer preferences and avoid obstructions.
 - i. Use the center position for the middle of the ramp run.
 - ii. Use the corner positions near obstacles or when adjoining platforms
 - iii. Pictures show some (not all) different LEG positions
 - b. Assemble FOOT to LEG with (1) 2 1/2" carriage bolt and nut in most convenient position (see below). If you are anchoring through the footplate itself position the footplate outside of the ramp.



Center Inside



Corner Inside



Center Outside

4. Assemble LEG to H-FRAME and set approximate height
 - a. Loosen (2) bolts on each side of H-FRAME Post
 - b. Slide LEG with FOOTPLATE attached inside H-FRAME post
 - c. Assemble LEG on other side of H-FRAME
 - d. Loosely tighten bolts on each side to hold LEG in position and set approximate height.

HINT: RAMP DECK WILL BE ABOUT 1 1/2 INCH ABOVE CROSSBAR

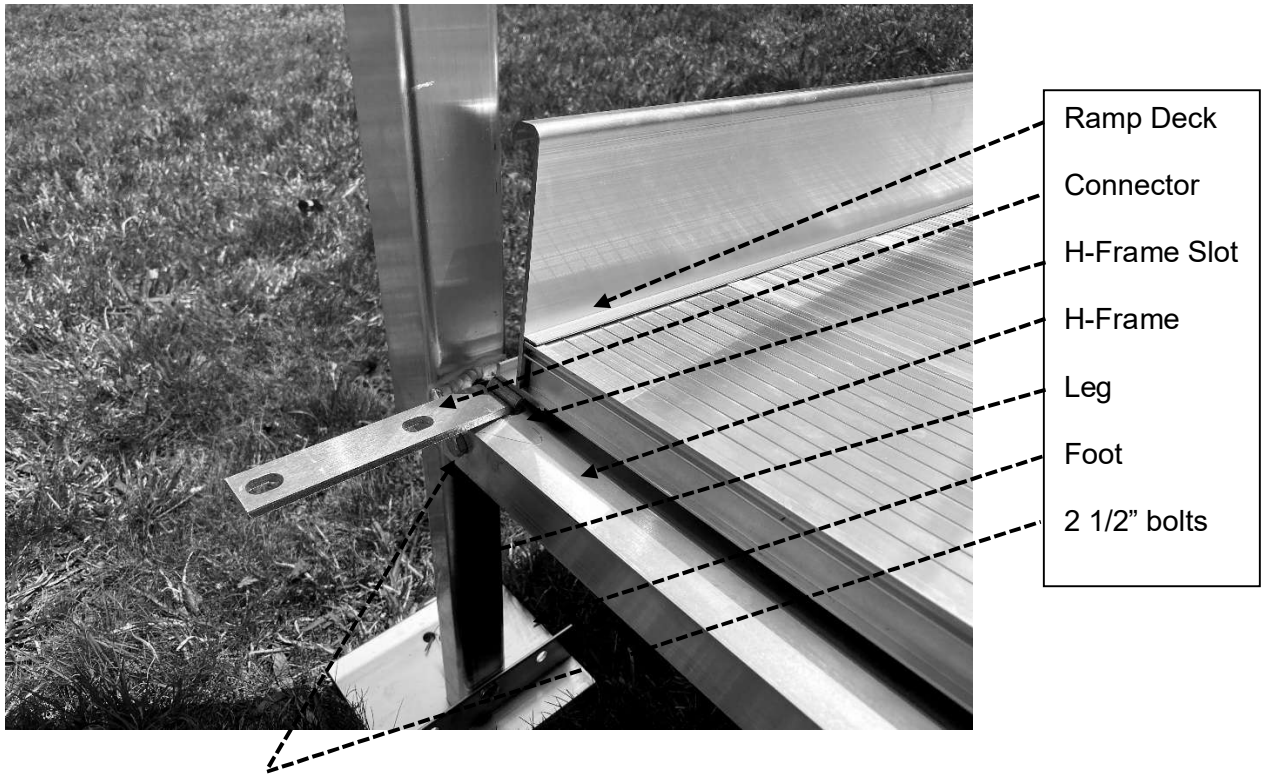
- Lowest Crossbar resting on the fin of the footplate
- Set other Crossbar at approximate setting
- (Example: 3 ft starter + 6 ft ramp = 9 in. minus 1.5 in. = 7.5 inches.
- It may be helpful to set up several H frames at the same time.



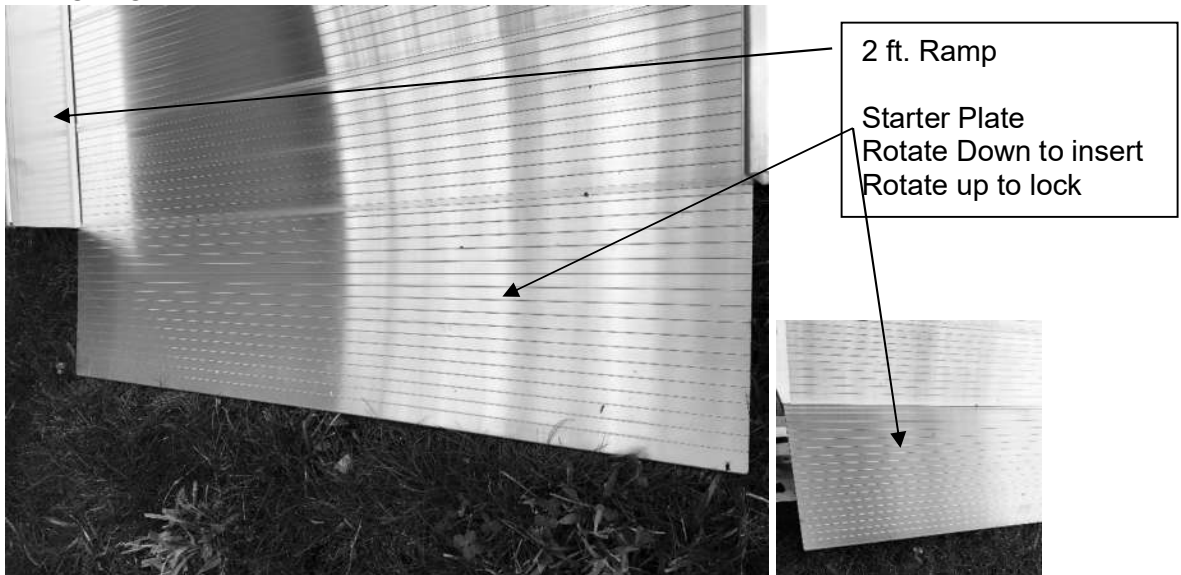
Ramp length	Crossbar Height
10	8.5
12	10.5
14	12.5
16	14.5
18	16.5
20	18.5
22	20.5
24	22.5
26	24.5
28	26.5
30	28.5

5. Add ramp sections sequentially as shown by inserting connector clips into slots in H-Frame.

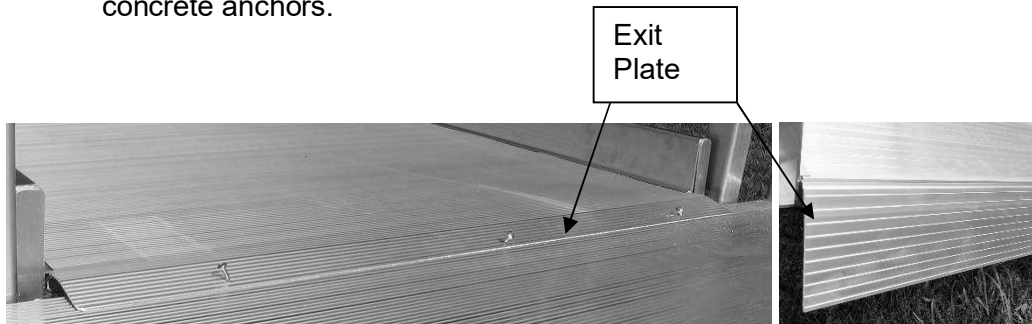




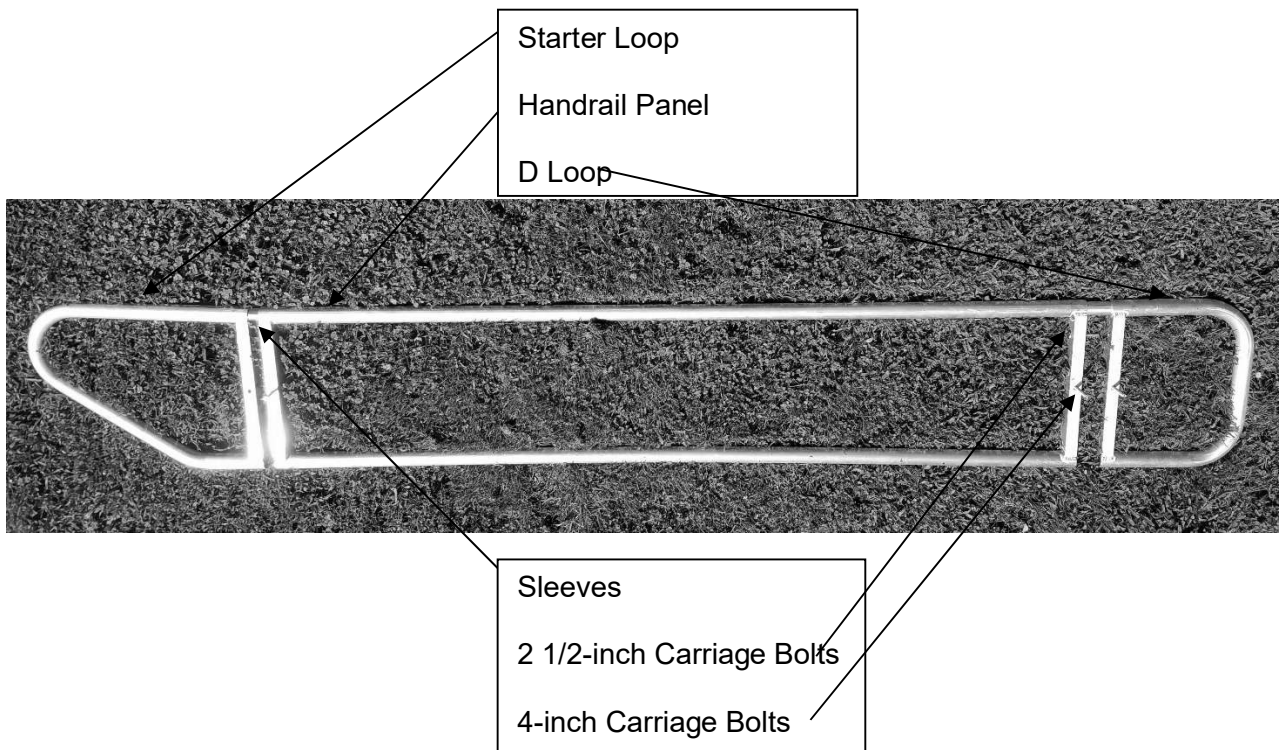
6. AT THE BOTTOM



7. AT THE TOP OR AT EACH LANDING Install EXIT PLATE over platform/porch or attachment point at top
 - i. Anchor to platform with (3) self-drilling screws
 - ii. On wood porch or landing use 2" wood screws and on concrete use suitable concrete anchors.



8. ADD Handrail Panels
 - a. Assemble Handrail Panels to the H-Frame using the 4-inch carriage bolts with head of the bolt on the inside of the ramp and the nut on the outside of the H-Frame
 - b. Join adjacent panels with the sleeve in the top handrail using a 2 1/2-inch carriage bolt to connect them, passing it through the hole in the adjacent uprights at the end of each panel.
 - c. Add D loop at the top or Starter loop at the bottom as appropriate



9. **CHECK SLOPE, LEVEL AND POSITION**, adjust as necessary and **TIGHTEN ALL BOLTS AND NUTS** on ramp, ramp supports, legs handrails, feet.

10. In Hurricane zone install hurricane anchors

Congratulations!